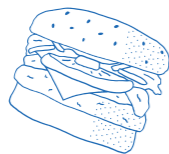


## BURGERS & SANDWICHES



**CHEESEBURGER**  
SMASHED BEEF PATTY, PICKLES, AMERICAN CHEESE, BURGER SAUCE, MUSTARD \_\_\_\_\_ 13  
\_\_\_\_\_ DOUBLE +3, GF AVB +2

**DELUXE CHEESE**  
SMASHED BEEF PATTY, AMERICAN CHEESE, WHITE ONION, TOMATO, LETTUCE, BURGER SAUCE, MUSTARD \_\_\_\_\_ 14.5  
\_\_\_\_\_ DOUBLE +3, GF AVB +2

**SFC BURGER**  
FRIED CHICKEN, BACON JAM, AMERICAN CHEESE, LETTUCE, SRIRACHA & MAYO \_\_\_\_\_ 14.5

**NASHVILLE HOT CHICKEN BURGER**  
SLAW, PICKLES, MAYO \_\_\_\_\_ 14.5

**CUBANO**  
MOJO PULLED PORK, SMOKY HAM, PICKLES, SWISS CHEESE, CORIANDER & LIME MAYO, MUSTARD \_\_\_\_\_ 17

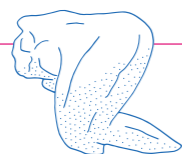
**PRAWN PO BOY**  
CAJUN PRAWNS, LETTUCE, TOMATO, GUACAMOLE, LOUISIANA REMOULADE \_\_\_\_\_ 17

**SQUID SLIDERS**  
2 SALT & PEPPER SQUID SLIDERS WITH CORIANDER SALSA & JAPANESE MAYO \_\_\_\_\_ 13

**VEGGIE BURGER**  
FALAFEL PATTY, PICKLED CARROT, LETTUCE, TOMATO, BEETROOT PESTO \_\_\_\_\_ 14  
\_\_\_\_\_ V +1

**EXTRAS**  
BACON +2, EXTRA PATTY & CHEESE +3, JALAPENO +1, CHEESE +1.5, GF BUN +2

## FRIED CHICKEN



**STANDARD BASKET**  
BONELESS SOUTHERN FRIED CHICKEN THIGH SERVED WITH RANCH & PICKLES \_\_\_\_\_ 13

**MAPLE BUTTER BASKET**  
BONELESS SOUTHERN FRIED CHICKEN THIGH COVERED IN OUR MAPLE BUTTER SAUCE \_\_\_\_\_ 14

**NASHVILLE HOT CHICKEN**  
BONELESS HOT DIPPED FRIED CHICKEN THIGH SERVED ON BREAD & PICKLES \*HOT \_\_\_\_\_ 14

**CHICKEN & WAFFLE**  
SOUTHERN FRIED CHICKEN SERVED WITH BUTTERMILK WAFFLES, MAPLE SYRUP & HERB BUTTER \_\_\_\_\_ 16

## MAKE IT A COMBO

ADD FRIES & SOFT DRINK TO YOUR BURGER/CHICKEN \$5  
ADD FRIES & TAP BEER/CIDER TO YOUR BURGER/CHICKEN \$8

## FOR SHARING



SKIN ON FRENCH FRIES GF \_\_\_\_\_ 6

**LOADED FRIES**  
CHEESE GRAVY, BACON BITS, SPRING ONIONS, PALACE SAUCE GF \_\_\_\_\_ 10

**TRUFFLE OIL MAC N CHEESE**  
3 CHEESE SAUCE, BREADED CRUMB 'N CHIVES \_\_\_\_\_ 10

**SKIRT STEAK**  
SERVED WITH CHIMICHURRI \_\_\_\_\_ 15

**POPCORN PORK BELLY**  
WITH HONEY SRIRACHA SAUCE \_\_\_\_\_ 10

**PORK RIBS**  
MOJO MARINATED PORK SPARE RIBS SERVED WITH PALACE SLAW GF \_\_\_\_\_ 17

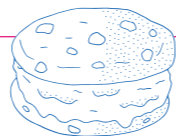
**ROASTED BABY CARROTS SALAD**  
LENTILS, BABY SPINACH, RED ONION, & CHIMICHURRI DRESSING GF V \_\_\_\_\_ 13

**LONG STEM BROCCOLI SALAD**  
GRILLED HALLOUMI, ROASTED RED PEPPERS, BABY SPINACH, PINE NUTS & DRESSING GF \_\_\_\_\_ 15

**EDAMAME BEANS**  
WITH CAJUN SALT GF V \_\_\_\_\_ 7

**PALACE SLAW GF** \_\_\_\_\_ 6

## DESSERT



**APPLE & RASPBERRY CRUMBLE WAFFLE**  
SERVED WITH VANILLA BEAN ICE CREAM \_\_\_\_\_ 12

**NUTELLA WAFFLE**  
WITH CARAMELISED BANANA, ROASTED PEANUTS & WHIPPED CREAM \_\_\_\_\_ 12

## SHAKES



OREO SHAKE \_\_\_\_\_ 7  
SALTED POPCORN CARAMEL \_\_\_\_\_ 7  
STRAWBERRY SHORT CAKE \_\_\_\_\_ 7  
VANILLA BANANA \_\_\_\_\_ 7

## BEERS



CANS OF VB & SPEIGHTS \_\_\_\_\_ 5

BOTTLES BUDWEISER, CORONA, AMSTEL LIGHT \_\_\_\_\_ 8

### ON TAP

GOOD GEORGE IPA \_\_\_\_\_ 9

GOOD GEORGE PILSNER \_\_\_\_\_ 9

GOOD GEORGE DROP HOP CIDER \_\_\_\_\_ 9.5

## WINES



### WHITES

FARMERS MARKET PINOT GRIS MARLBOROUGH \_\_\_\_\_ 9/43

BROOKFIELDS PINOT GRIS MARLBOROUGH \_\_\_\_\_ 51

FARMERS MARKET SAUVIGNON BLANC \_\_\_\_\_ 9/43

ALLAN SCOTT SAUVIGNON BLANC MARLBOROUGH \_\_\_\_\_ 53

BROOKFIELDS CHARDONNAY HAWKES BAY \_\_\_\_\_ 9/43

MATAWHERO CHARDONNAY GISBORNE \_\_\_\_\_ 59

DE BORTOLI PROSECCO NEW SOUTH WALES \_\_\_\_\_ 9/41

### REDS AND VARIETALS

LA LA LAND TEMPRANILLO VICTORIA \_\_\_\_\_ 9.5/45

CHAKANA MALBEC MENDOZA \_\_\_\_\_ 9.5/45

MUD HOUSE PINOT NOIR MARLBOROUGH \_\_\_\_\_ 10/51

MADAM SASS PINOT NOIR CENTRAL OTAGO \_\_\_\_\_ 60

MATAWHERO ROSÉ GISBORNE \_\_\_\_\_ 55

GRANT BURGE SHIRAZ BARROSA \_\_\_\_\_ 55

## COCKTAILS



PEACH & MANGO ICE TEA VODKA, PEACH LIQUEUR, MANGO TEA \_\_\_\_\_ 16

**COLD FILTER MARTINI**  
COLD FILTER COFFEE, KAHLÚA, VODKA \_\_\_\_\_ 16

**PALACE G&T**  
BEEFEATER GIN, ELDERFLOWER, FEVER TREE TONIC & CUCUMBER \_\_\_\_\_ 15

**CUBA LIBRE**  
SPICED RUM, LIME & COKE \_\_\_\_\_ 11

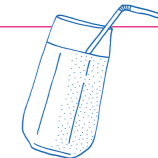
**DARK N STORMY**  
KRAKEN RUM, GINGER BEER, LIME & BITTERS \_\_\_\_\_ 11

**ELDERFLOWER SPRITZ**  
ELDERFLOWER, PROSECCO, LIME & SODA \_\_\_\_\_ 13

**PALAMO**  
TEQUILA, RUBY GRAPEFRUIT, GRAPEFRUIT TONIC & FRESH LIME \_\_\_\_\_ 15

**PORT MIAMI**  
VODKA, CRÈME DE MURME, PROSECCO & LEMON \_\_\_\_\_ 12

## NON-ALCOHOLIC



COKE, DR PEPPER, LEMONADE, GINGER BEER, CREAMING SODA \_\_\_\_\_ 4  
MAKE IT FLOAT \_\_\_\_\_ 4  
ORANGE & APPLE JUICE \_\_\_\_\_ 5


## DINER & BAR

# PALACE

# NIGHT MENU