

SODAS.



| | |
|----------------|---|
| KARMA COLA | 5 |
| LEMMY LEMONADE | 5 |
| GINGERELLA | 5 |
| BLOOD ORANGE | 5 |

JUICES.



| | |
|--------|---|
| APPLE | 5 |
| ORANGE | 5 |

SHAKES.



| | |
|------------------------|---|
| CHOCOLATE OREO | 7 |
| SALTED POPCORN CARAMEL | 7 |
| VANILLA BANANA | 7 |
| FRESH STRAWBERRY | 7 |

COCKTAILS.



| | |
|--|-----|
| <u>FRED PARENT</u> HENDRICKS GIN, LEMON, APPLE JUICE | 16 |
| <u>PALOMA</u> TEQUILA, LIME, GRAPEFRUIT JUICE | 16 |
| <u>VICE</u> RUM, LIME, BASIL | 15 |
| <u>CARAMEL WHISKEY SOUR</u> WHISKEY, CARAMEL, EGG WHITE | 15 |
| <u>PORT MIAMI</u> VODKA, PROSECCO, BERRY, LEMON | 12 |
| <u>ELDERFLOWER SPRITZ</u> ELDERFLOWER LIQUEUR, LIME, MINT | 14 |
| <u>SLUSHIE SPECIAL</u> | POA |

P

WINES.



GLS/BTL

WHITES

| | |
|--|------|
| FARMERS MARKET PINOT GRIS - MARLBOROUGH | 9/43 |
| BROOKFIELDS PINOT GRIS - MARLBOROUGH | 51 |
| FARMERS MARKET - SAUVIGNON BLANC | 9/43 |
| ALLAN SCOTT SAUVIGNON BLANC - MARLBOROUGH | 53 |
| BROOKFIELDS CHARDONNAY - HAWKES BAY | 9/43 |
| MATAWHERO CHARDONNAY - GISBORNE | 59 |
| DE BORTOLI PROSECCO - NEW SOUTH WALES | 9/41 |

REDS AND VARIETALS

| | |
|--|--------|
| LA LA LAND TEMPRANILLO - VICTORIA | 9.5/45 |
| CHAKANA MALBEC - MENDOZA | 9.5/45 |
| MUD HOUSE PINOT NOIR - MARLBOROUGH | 10/51 |
| MADAM SASS PINOT NOIR - CENTRAL OTAGO | 60 |
| MATAWHERO ROSÉ - GISBORNE | 55 |
| GRANT BURGE SHIRAZ - BARROSA | 55 |

BEERS.



ON TAP

| | |
|-------------------------------|-----|
| GOOD GEORGE IPA | 9 |
| GOOD GEORGE BLACK DORIS CIDER | 9 |
| GOOD GEORGE GUEST TAP | POA |

BOTTLE

| | |
|--------------|---|
| BUDWEISER | 8 |
| CORONA | 8 |
| AMSTEL LIGHT | 8 |

BURGERS.



1.

GRASS FED BEEF PATTY
SMOKED CHEDDAR
PICKLES & CHARRED ONION
MUSTARD MAYO & KETCHUP
BRIOCHE BUN 12



2.

SOUTHERN FRIED CHICKEN
CHEDDAR
CORN & JALAPENO SLAW
CHIPOTLE MAYO
BRIOCHE BUN 14



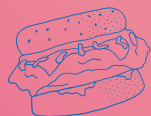
3.

BATTERED MARKET FISH
CHEDDAR
PICKLED CUCUMBER
CRISPS
PALACE TARTARE
ICEBERG
STEAMED BRIOCHE BUN 15.5



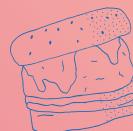
4.

GRASS FED BEEF PATTY
CHEDDAR
ONION RINGS
BACON & PICKLES
ICEBERG
BBQ SAUCE & MAYO
BRIOCHE BUN 15.5



5.

SOUTHERN FRIED CHICKEN
BACON JAM
CHEDDAR
ICEBERG
MAYO & SRIRACHA
BRIOCHE BUN 14.5



6.

PUMPKIN & CHICKPEA PATTY
CHEDDAR
ONION JAM
ICEBERG
TOMATO
SMOKED BEETROOT MAYO
BRIOCHE BUN 13.5

— CAN BE MADE VEGAN +1

- GF BUN AVAILABLE OR HAVE YOUR
BURGER TURNED INTO A SALAD BOWL

- ALL MEAT & EGGS ARE FREE RANGE &
SOURCED LOCALLY WHERE POSSIBLE

- ALL BEEF BURGERS COOKED PINK

PALACE

SALADS.



7.

PAN FRIED FISH
ISRAELI COUSCOUS
BABY SPINACH
CHERRY TOMATO
PARSLEY & SPRING ONION
LEMON VINAIGRETTE 15



8.

PAN SEARED BROCCOLI
TOASTED ALMONDS & SESAME
BABY SPINACH
PARMESAN
MISO DRESSING 13



SIDES.

WINGS OF THE WEEK 13
POPCORN PORK BELLY BITES W HONEY SRIRACHA 9.5
TATER TOTS TOSSED IN MOZZARELLA & GRAVY 9
EDAMAME BEANS W CAJUN SALT 6
SKIN ON FRENCH FRIES 6



DESSERTS.

ICE CREAM SANDWICH -
FRESHLY BAKED CHOC CHIP COOKIE WITH VANILLA
BEAN ICE CREAM AND SALTED CARAMEL SAUCE 12

FRESH DONUTS -
ASK WAITER FOR FLAVOUR OF THE WEEK POA

PALACE